

Connecting your machine to the Nocospray Tracker software:

When you plug the mini-USB into the back of the machine and either turn the machine on or plug it into your computer you should see 3 lights on like this:

Mini USB goes here – in the back of the machine near the “On” button



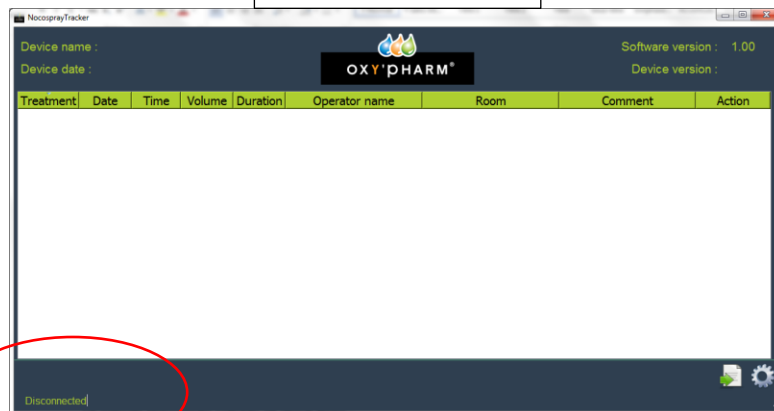
When the mini-USB is connected and the machine has power you will see these 3 lights

If the software does not open automatically, open it. When both the mini-USB and the computer USB are connected and the computer and machine are in communication you should see your data and in the lower left corner of the screen you will see the word ‘Connected’. If the software opens but doesn’t ‘see’ a machine you will see no data and at the bottom left it will say ‘Disconnected’. Below I have circled what will read ‘Disconnected’:

Connected



Disconnected



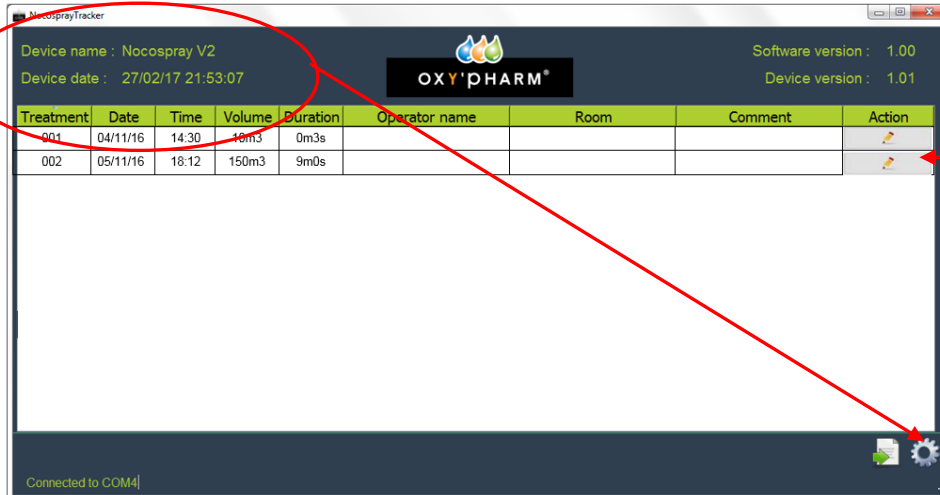
Customising and editing your data reports:

If your software recognizes the machine (as in the photo above) then you can edit and download the data.

The information you can edit includes:

- The name of the machine
- The date and time format
- Identify the operator
- Identify the location of the treatment
- Include brief comments

To name your machine or change the date and time format select the settings-style icon in the lower right corner and follow instructions.



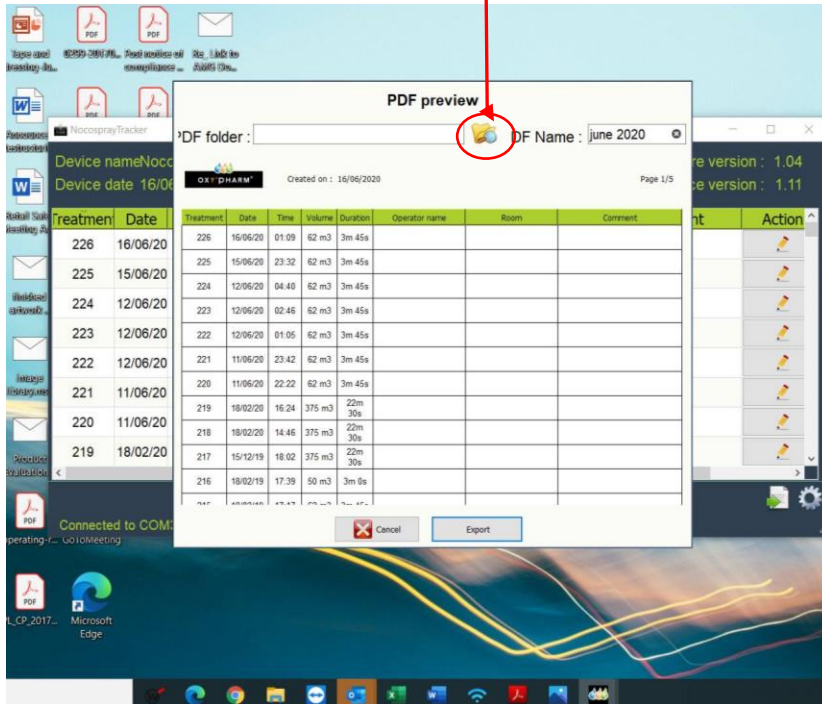
To edit the Operator name, Room or Comment fields select the pencil icon on the right-hand side of the event (each line). Once you have edited a field and saved the change that field cannot be edited again.

Exporting your data

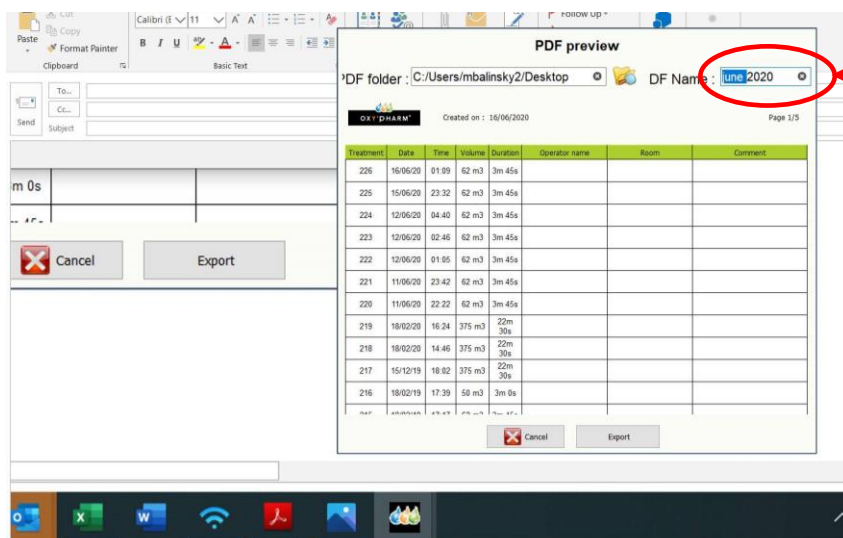
Step 1 Select the export button in the lower right corner of the screen:



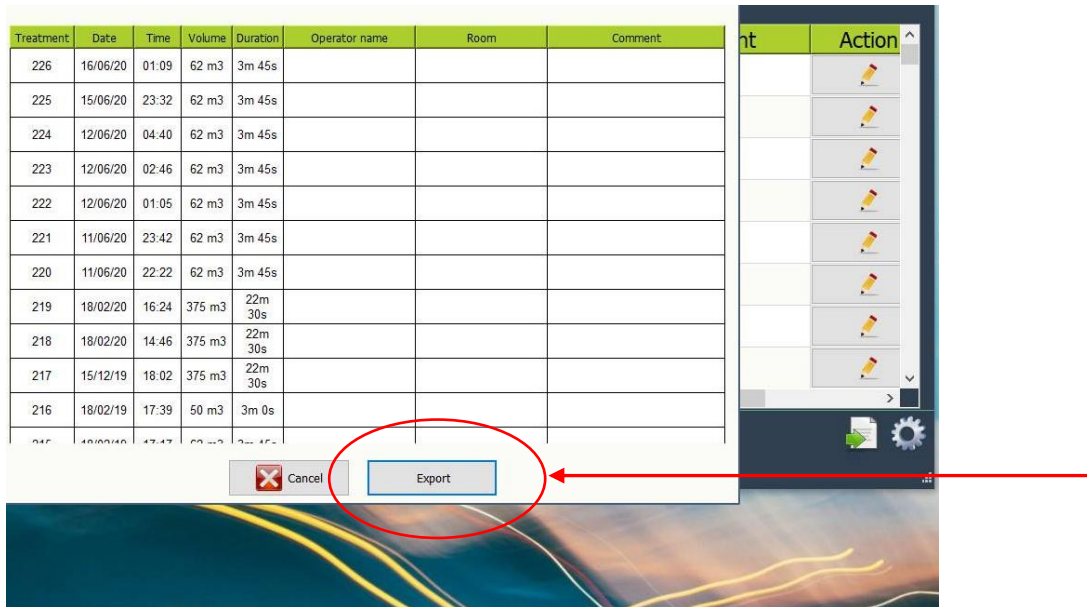
Step 2: Once you have selected to export you will see an example of your data report and be able to choose the folder where you want to save it by selecting the folder icon to the right of the 'PDF Folder' Field.



Step 3: Name your file in the field called DF Name at the right of the screen.



Step 4: Select 'Export'



Step 5: You will see a prompt indicating that your data has been exported and saved.

